



STRAIL[®]lastic **STRAIL[®]way**



Installation lever Operating manual



Subject to technical modifications / 03_2022



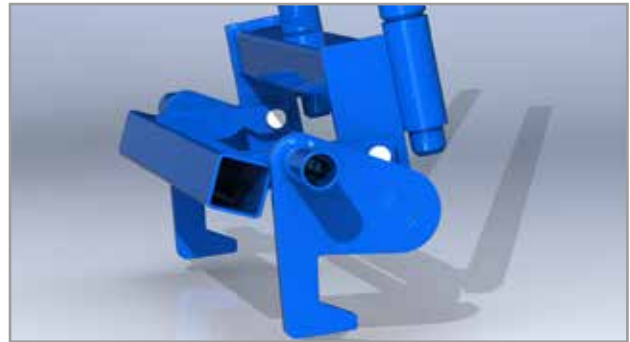
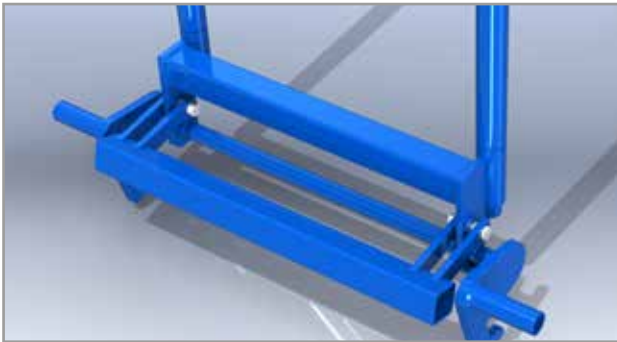
KRAIBURG STRAIL[®] GmbH & Co. KG | STRAIL[®] | STRAIL^{lastic} | STRAIL^{way}

84529 Tittmoning | Goellstraße 8 | phone + 49 / (0) 86 83 / 7 01-0 | fax + 49 / (0) 86 83 / 7 01-126
info@strail.com | www.strail.com | www.strailastic.com | www.strailway.com

Read this operation manual carefully before use and adhere to it unconditionally during the application!
It has to be kept easily accessible for the user at all times!

1 / **INSTALLATION LEVER**

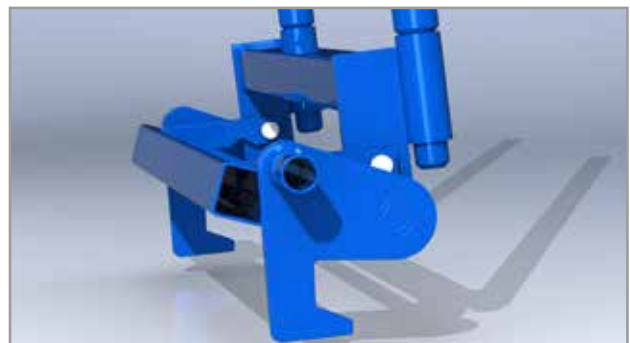
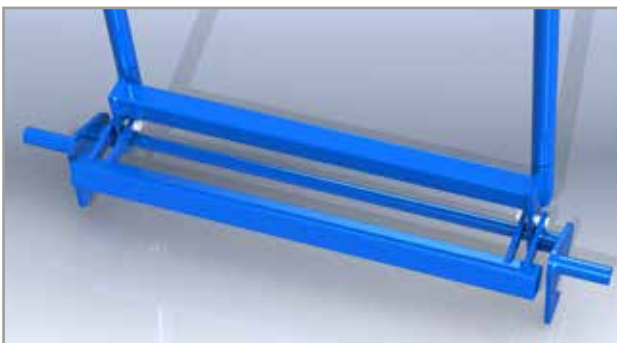
Installation lever **STRAIL** 600 mm (flange groove 45 mm / 60 mm)



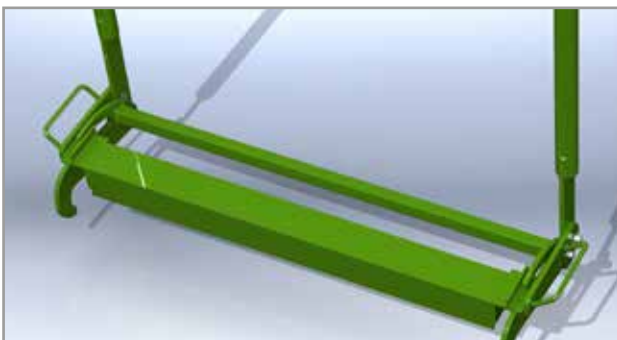
Installation lever **STRAIL** 1200 mm



Installation lever **pedeSTRAIL** (flange groove 45 mm / 60 mm)



Installation lever **innoSTRAIL** 900 mm / 1200 mm



2 / SECURITY ADVICE

- All people and workmen staying in the surroundings have to be warned against the crushing hazard.
- Two persons are required for the application (three persons for **STRAIL** 1 200 mm).
- Wear your personal protective equipment.
- A secure standing position is required when using the tool.
- To lift and move the tool, only take it on the designated handles and lever rods (two persons are required).
- Make sure that the tool lies stably under the rail head.
- When pressing together watch out for moving parts.
- To be used only by fit, qualified and instructed expert staff.

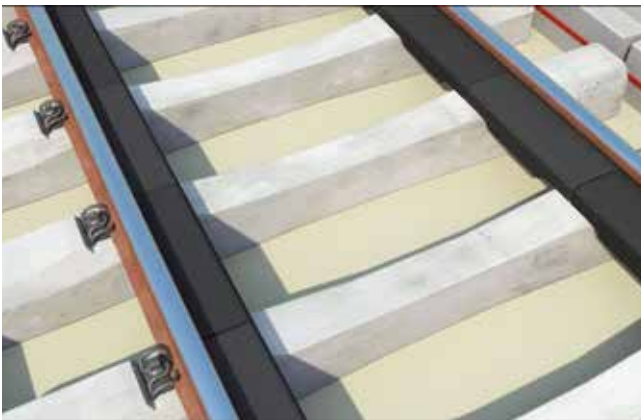
3 / GENERAL ADVICE

- Carry out a visual examination of the tool prior to use.
- Insert the lever rods into the installation lever and check their correct position prior to use. It is not necessary to take them out during the installation.
- Level crossing panels may only be installed separately.
- Grease the contact surface of the rubber panel at the installation lever thoroughly with the corresponding assembly paste to facilitate the sliding of the panel under the rail head.
- Make sure that both hooks are positioned correctly under the rail head.
- Remove the lever rods for transport and keep them separately.
- During the pressing only the operating workmen are allowed to stay in the danger zone.
- When discovering defects stop using the tool immediately.

4 / SERVICE AND MAINTENANCE

- When discovering defects renew the tool immediately or send it back to the manufacturer for repair. Further use is not allowed.
- Protect the tool against corrosion when it will not be used for a lengthier period of time.

5 / CORRECT USE OF THE **STRAIL®** INSTALLATION LEVER (600 mm, FLANGE GROOVE 45 mm / 60 mm)



Inserting the filler blocks.



Insert the **STRAIL** inner panel on one side with its lip under the rail head and grease the lip on the other side with the assembly paste.



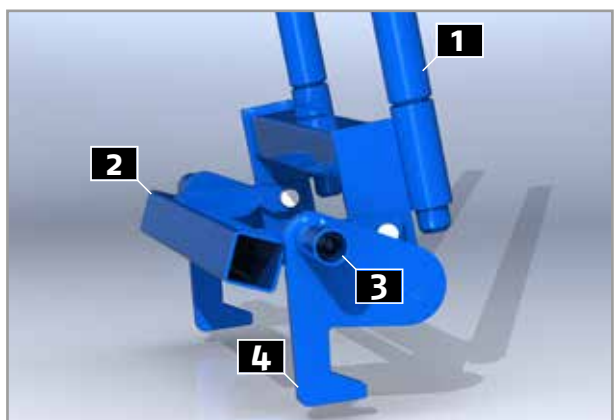
Open the installation lever and hook it in under the rail head.



During installation find a secure standing position on the panel.

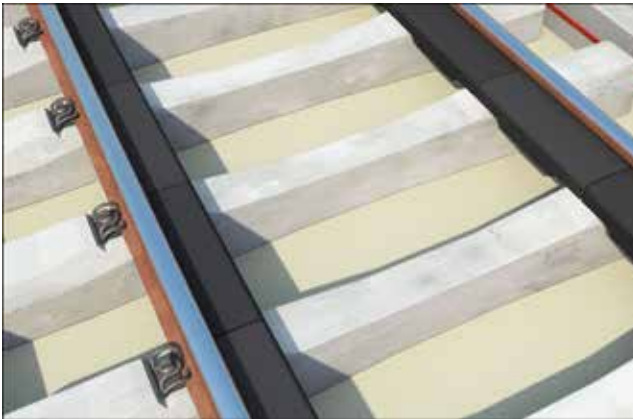


Press the edge of the panel against the installation lever until the lip slides under the rail head.



1 lever rod
2 pusher
3 handle
4 hook for rail head

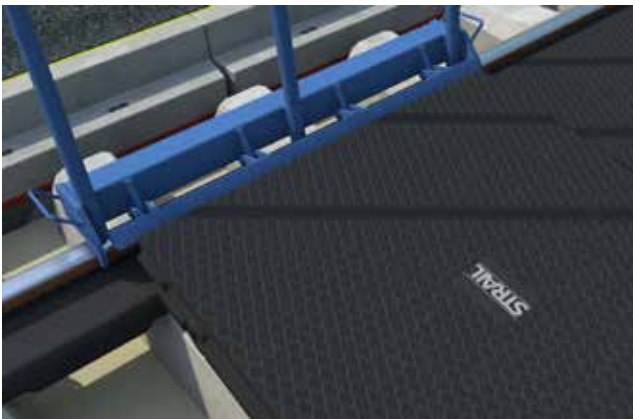
6 / CORRECT USE OF THE **STRAIL®** INSTALLATION LEVER 1200 mm



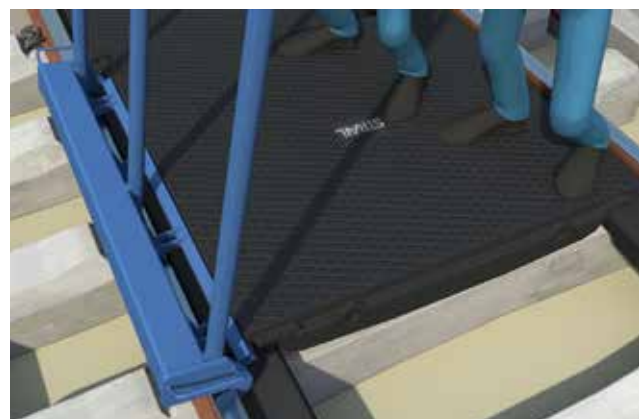
Inserting the filler blocks.



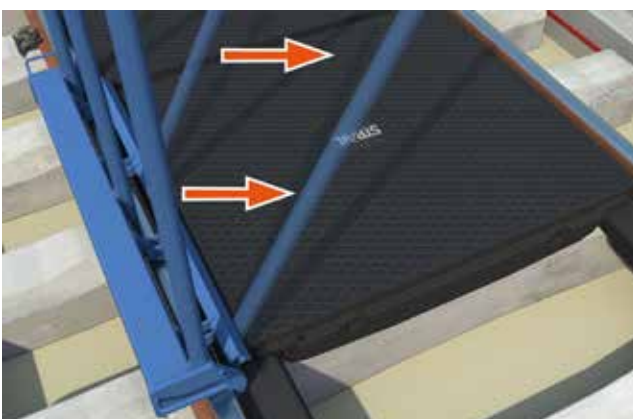
Insert the **STRAIL** inner panel on one side with its lip under the rail head and grease the lip on the other side with the assembly paste.



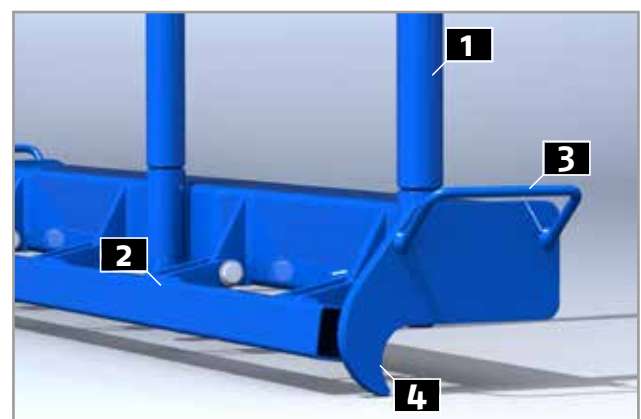
Open the installation lever and hook it in under the rail head.



During installation find a secure standing position on the panel.



Press the edge of the panel against the installation lever until the lip slides under the rail head.



1 lever rod
3 handle

2 pusher
4 hook for rail head

7 / CORRECT USE OF THE **pedeSTRAIL** INSTALLATION LEVER (FLANGE GROOVE 45mm / 60mm)



Insert the **pedeSTRAIL** inner panel on one side with its lip under the rail head and grease the lip on the other side with the assembly paste.



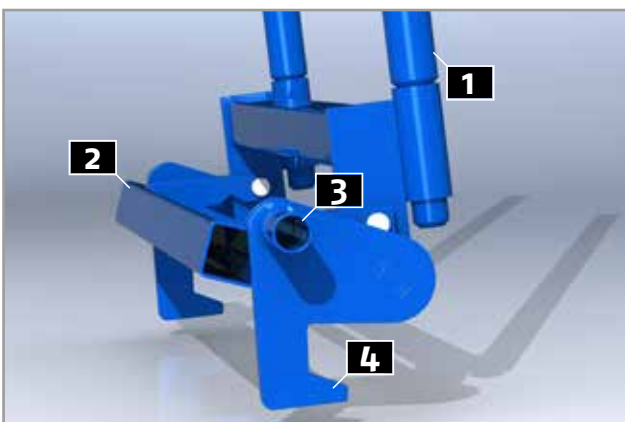
Open the installation lever and hook it in under the rail head.



During the installation find a secure standing position on the panel.



Press the edge of the panel against the installation lever until the lip slides under the rail head.



- | | |
|--------------------|-----------------------------|
| 1 lever rod | 2 pusher |
| 3 handle | 4 hook for rail head |

8 / CORRECT USE OF THE **inno**STRAIL INSTALLATION LEVER (900mm / 1200mm)



Insert the **inno**STRAIL inner panel on one side under the rail head and grease the flange groove support on the other side with the assembly paste.



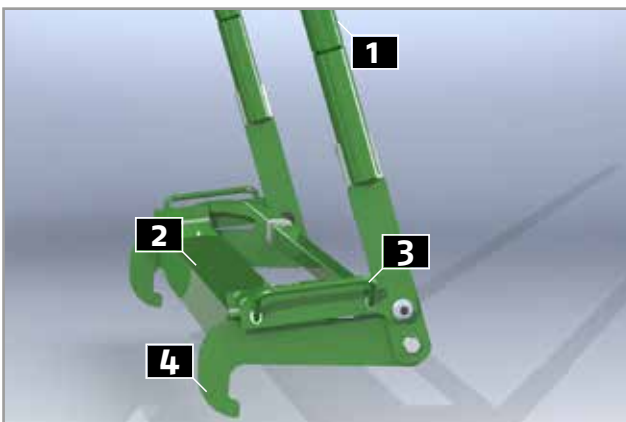
Open the installation lever and hook it in under the rail head.



During the installation find a secure standing position on the panel.



Press the edge of the panel against the installation lever until the flange groove support slides under the rail head.



- | | |
|--------------------|-----------------------------|
| 1 lever rod | 2 pusher |
| 3 handle | 4 hook for rail head |

9 / LEGAL PROVISIONS

The German safety regulations (UVV) and the operation manual have to be put at the operator's disposal and have to be adhered to.

– **Examination prior to first use**

Done by the manufacturer.

– **Visual examination prior to use**

Carry out visual examinations before and after using the tool. When defects are discovered act according to **# 4 „Service and Maintenance“**.

– **Extraordinary examinations**

The user is responsible for carrying out an extraordinary examination of the tool after events of damage or other events that may interfere with the proper functioning of the tool.

10 / EC DECLARATION OF CONFORMITY

EC Declaration of Conformity according to the EC machinery directive 2006/42/EC

Name and address of Manufacturer:

KRAIBURG STRAIL GmbH & Co. KG
Goellstr. 8
D-84529 Tittmoning

We declare that the following product complies with the safety and health requirements of the EC directives:

Type:**Type no.:**

Installation lever STRAIL 600mm / flange groove 60mm	00142100
Installation lever STRAIL 600mm / flange groove 45mm	00142200
Installation lever STRAIL 1200mm	01269800
Installation lever pedeSTRAIL / flange groove 60mm	00366900
Installation lever pedeSTRAIL / flange groove 45mm	00497600
Installation lever innoSTRAIL 900mm	01122300
Installation lever innoSTRAIL 1200mm	02363500

Corresponding EC directives:

EG machinery directive 2006/42/EG

The following person is authorised to compile the technical documents:

Herbert Gfreiner
Goellstr. 8
84529 Tittmoning
Germany

This declaration becomes invalid when there is a change to the product which was not agreed upon.

Declarations of conformity and manufacturer's declarations are available where required.

Tittmoning, 02.03.2022



Günther Wagner
General Manager