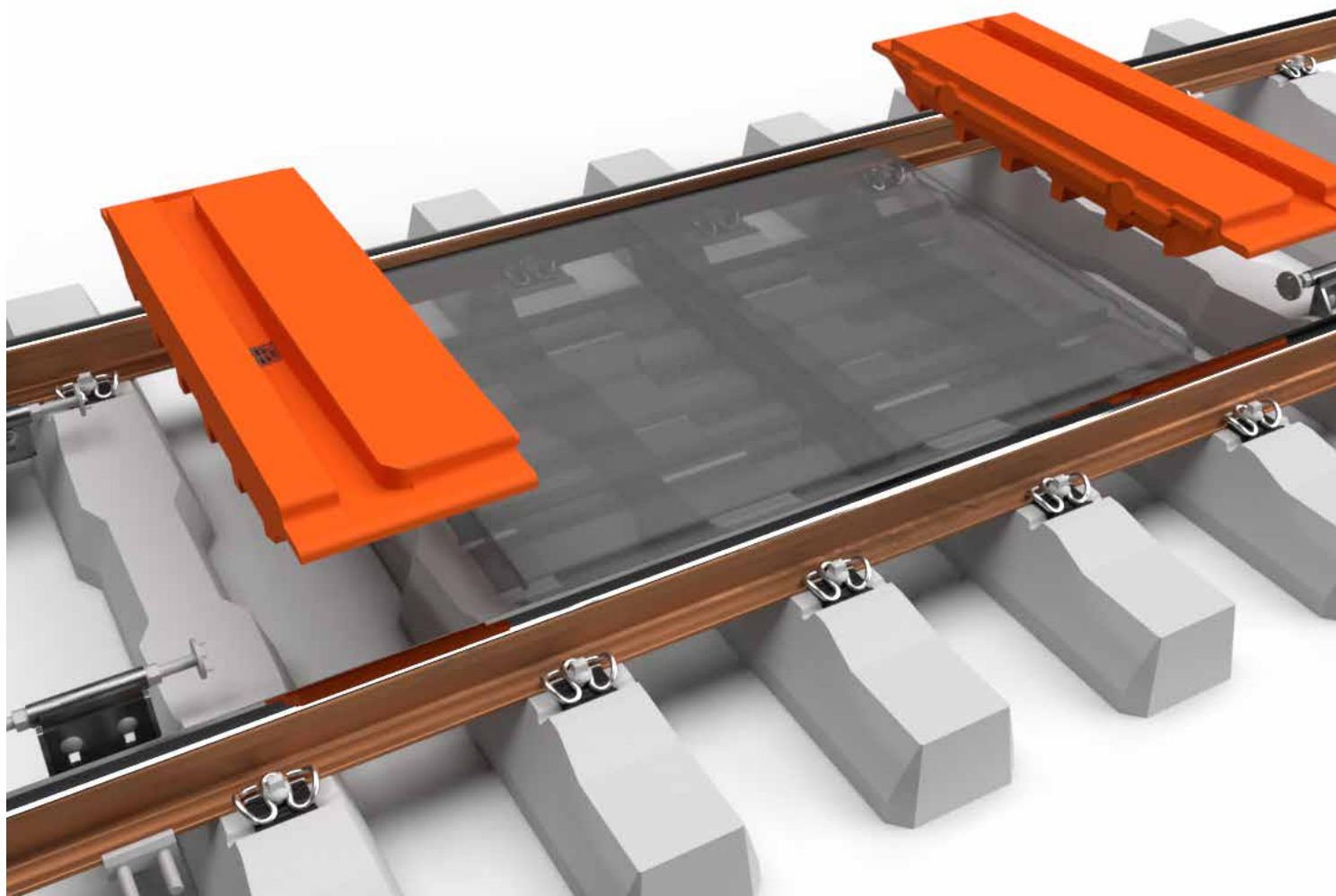




STRAIL[®]astic **STRAIL[®]way**



Drainage-Set

Rev. 04 | 03.02.2025 / HGF/REN



Level crossing systems from **KRAIBURG STRAIL** for passing over tracks.

The installation of **KRAIBURG STRAIL** products should be carried out by suitable, qualified and instructed specialist personnel.

Important! Read carefully before use and keep for future reference.

Note: A specific drawing is enclosed. The information in this drawing always has priority and must be taken into account.

Return of old **STRAIL** panels is possible, please contact your local **STRAIL** representative.

Note: For the installation of the individual elements, the recommended installation tool must be used, to avoid damaging the panels.

Note: Installation of drainage panel outside the traffic area and is not suitable for walking or driving on!

Please Note

Please read the document carefully and install KRAIBURG STRAIL products in compliance with the manufacturer's guidelines, or request assistance from our assembly team. This document is for information purposes only in connection with KRAIBURG STRAIL products. No intellectual property rights are granted by this document. No part of this document may be reproduced in any form in whole or in part without the express written permission of KRAIBURG STRAIL. KRAIBURG STRAIL expressly disclaims any infringement of the rights of third parties which are the intellectual, industrial or other property of third parties. Changes and errors are reserved. The information provided in this document reflects our state of knowledge on the day of publication. The General Terms and Conditions of KRAIBURG STRAIL apply in the currently valid version.

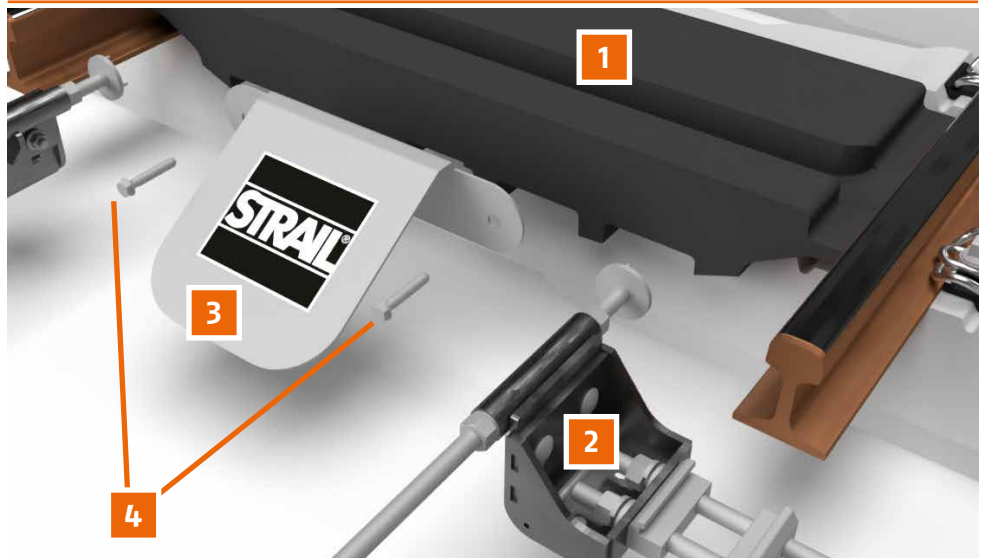
Content

Components	2
Tools	2
General preparation	3
Preparation for retrofitting	4
Installation	5
Disassembly	6

Components

1. Drainage panel
2. Shift protection compact
3. Deflection plate of the drainage panel
4. Fastening material¹⁾
Bolts SW 24, galvanised

The system



Necessary tools

1. Plastic hammer (5 kg)
2. Ratchet* with allen key SW 27*
3. Open-end spanner SW 24 and SW 36 mm

Recommended tools

4. Track broom, ballast fork, spikes, lifting belt, saw
5. Manual installation: approx. 2 - 3 persons
Installation with excavator:
approx. 1 - 2 persons

¹⁾ Included in delivery



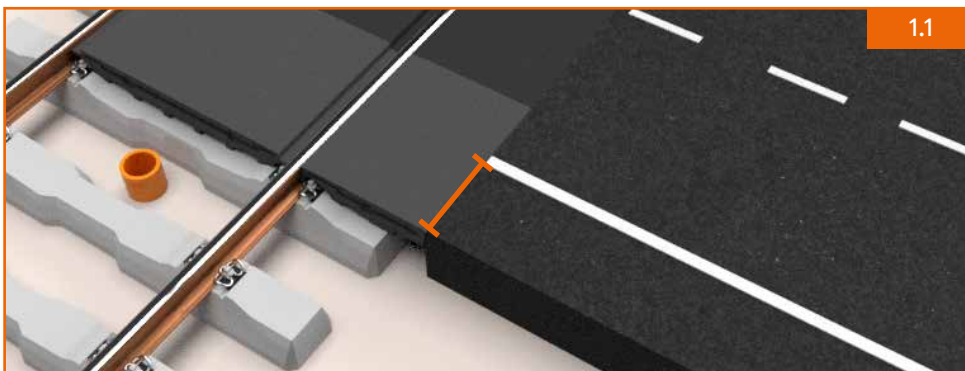
* Note applicable documents & drawing

1. General preparation

- 1.1 Distance between last inner panel and edge of carriageway must comply with the applicable approval.

Example Switzerland:

- ≥ 50 cm for road traffic
- ≥ 20 cm for pedestrian crossings



- 1.2 Drainage pipe and drainage panel position must be one above the other.

Recommendation:

Drainage pipe min. DN 150



- 1.3 Fill track ballast to top edge of sleeper and tramp.

- 1.4 Remove ballast from the sleeper surfaces.



- 1.5 The upper edge of the drainage pipe is the same as the upper edge of the sleeper.

Note: If necessary, shorten the overhang.



2. Preparation for retrofitting

2.1 Disassemble individual fastening.



2.2 Disassemble the deflection plate.



2.3 Retighten with ratchet*.

Note: Left-hand thread.

For exact work steps, please refer to the **applicable instruction**.



2.4 **Special case STRAIL:**
if the filler block protrudes,
cut to panel size or remove.



* Note applicable documents & drawing

3. Installation

- 3.1 Insert the drainage panel on one side.
Note the tongue and groove connection.



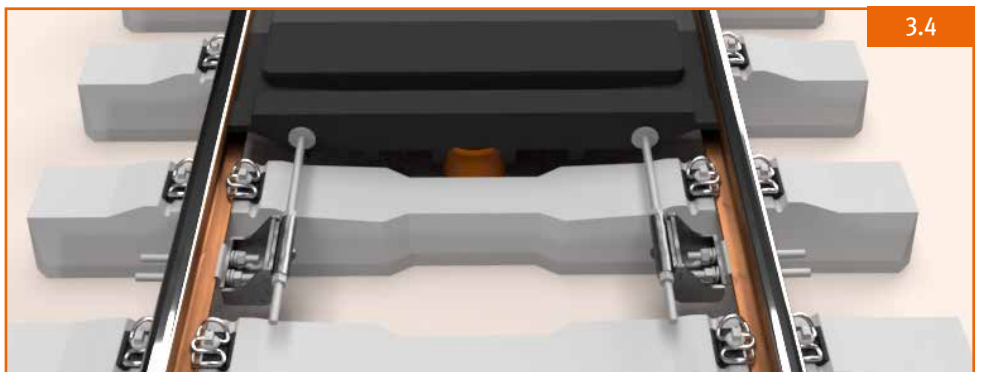
- 3.2 Use the installation lever or hammer on the second side to bring it under the rail head.
Note: Underlay the free end with ballast



- 3.3 Join with plastic hammer.



- 3.4 Install the shift protection compact* on both sides.
Note: check that all nuts are tightened!



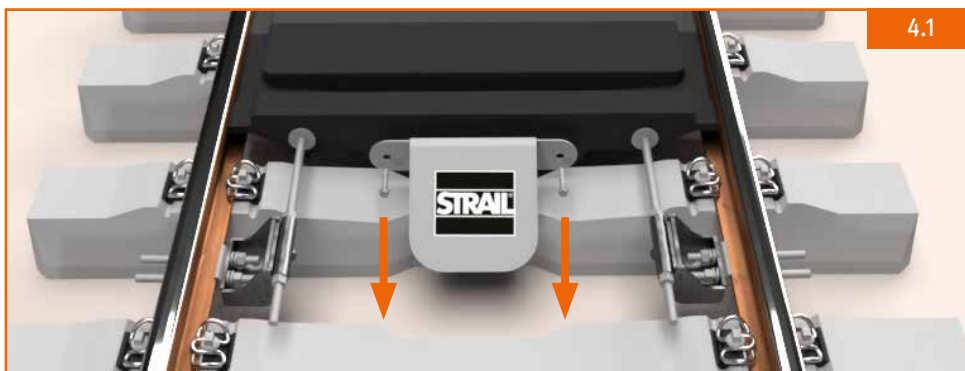
- 3.5 Fasten the deflection plate drainage panel with 2 screws.



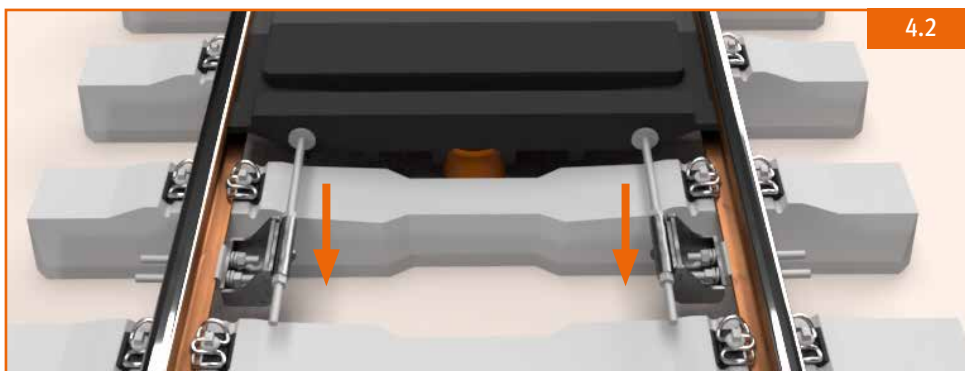
* Note applicable documents & drawing

4. Disassembly

4.1 Remove the deflection plate.



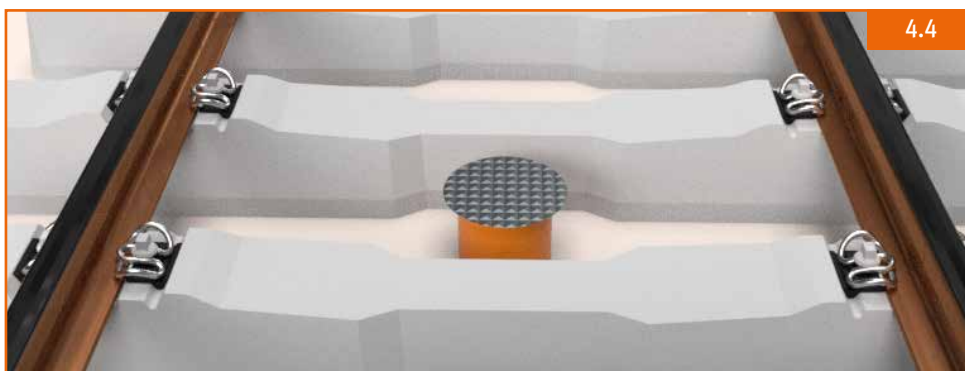
4.2 Remove the shift protection compact*.



4.3 Remove the drainage panel.



4.4 Cover the drainage pipe.



* Note applicable documents & drawing