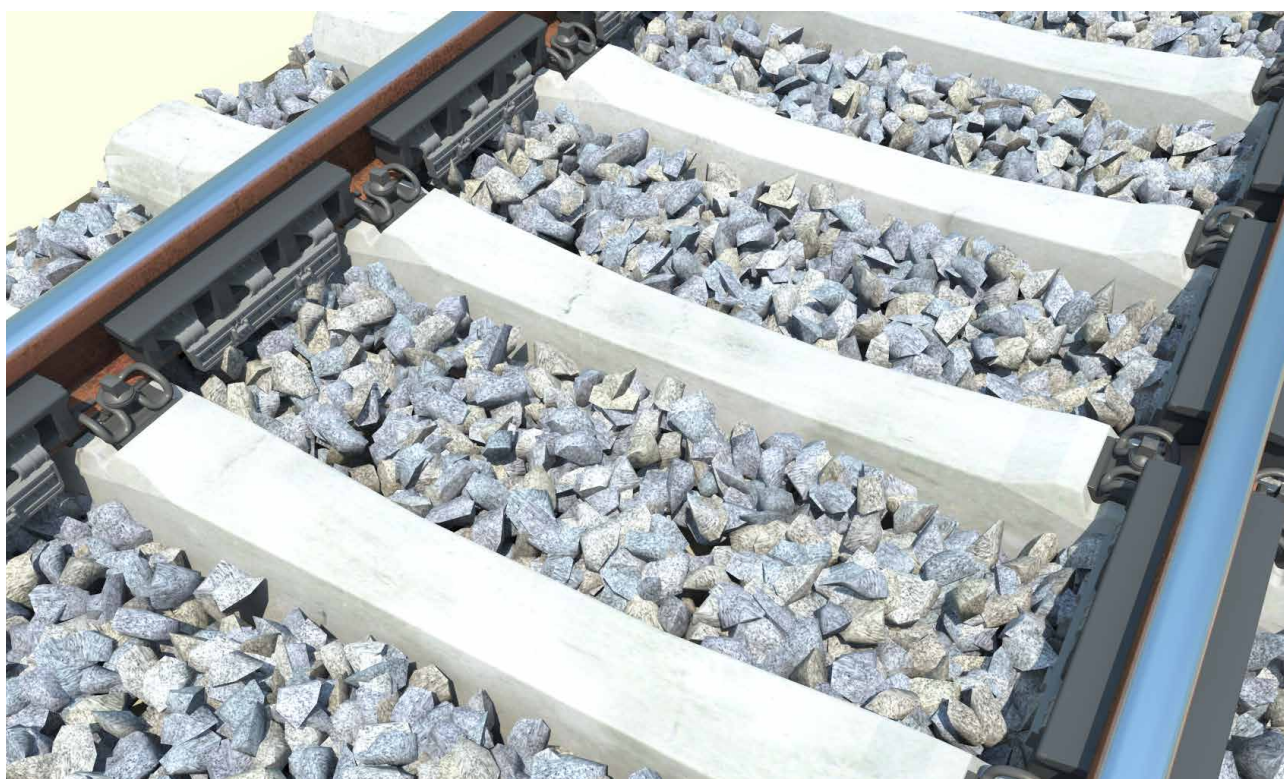




STRAIL[®]lastic **STRAIL[®]WAY**



STRAILlastic_A synth Installation instructions



Subject to technical modifications / June 2025 / JBA



KRAIBURG STRAIL[®] GmbH & Co. KG | STRAIL[®] | STRAILlastic | STRAILWAY

D-84529 Tittmoning | Göllstraße 8 | Tel. + 49 / (0) 86 83 / 7 01-0 | Fax + 49 / (0) 86 83 / 7 01-126
info@strail.de | www.strail.de | www.strailastic.de | www.strailway.de

STRAIL[®]astic_A SYNTH > INSTALLATION INSTRUCTIONS

CONTENT

1. Track availability
2. Installation
3. Installation performance
4. Rail grinding / re-profiling / tamping
5. Removal / selective removal

These instructions describe the installation of our „**STRAILastic_A synth**“ damper.

1 / TRACK AVAILABILITY

The system can be installed during operation in train breaks of more than 5 minutes.

In order to coordinate work progress we absolutely recommend drawing up an appropriate and detailed work schedule (always depending on the train schedule).

2 / INSTALLATION

Before starting work, the working surfaces must be cleaned.

Remove scale, loose rust and dirt from the rail chamber using brushes, pressurised water or compressed air. For proper installation, a free space of approx. 40 mm must be created under the rail foot.

Move the **STRAILastic_A synth** damper to the installation position, e.g. using a transport platform.

Then place the dampers in the sleeper bay in the direction of installation.

It is recommended to position the **STRAILastic_A synth** dampers in the sleeper bay in such a way that the rail contact surfaces point upwards and towards the rail.

Note: Sleeper bays without dampers as specified by the network operator. Welding joints, screws, etc. must also be taken into account.

Apply **STRAILastic_A Coating black >2mm thickness** to both rail contact surfaces (to the rail foot and to the rail web) using a roller.

STRAILastic coating black 684:

Working temperature (component temperature) +5°C to +35°C

Storage: Cool and dry, protected from sun and frost

Note: Protect open buckets from rain.

PLEASE NOTE:

The positioning of the dampers into the rail web has to be done "wet".

The drying time of the coating depends on the climatic conditions, in particular with regard to solar radiation, which shortens the installation time.

Take the clamp and hammer in two fixing pins.

The fixing pins have a small stop on the inside on one side. This stop must point upwards! Press the fixing pins into the clamp as far as they will go.

Press the **STRAILastic_A synth** dampers into the rail chamber (if possible in the middle of the sleeper bay) and insert the prepared clamp with the fixing pins under the rail.

Press the opposite **STRAILastic_A synth** dampers as parallel as possible onto the rail and mount the other half of the **STRAILastic_A synth** clamp onto the fixing pins.

Assemble manually using a bit of pressure.



Using the **STRAILastic_A synth** installation tool (incl. special attachable **STRAILastic_A synth** attachment) the **STRAILastic_A synth** clamps are pressed into the sleeper bay, so that the clamps snap into their final position.

Please note

The machine needs to be set to the corresponding end stop position of the respective width of the rail base.
A corresponding template is included in the scope of supply for an exact positioning.

Our **STRAILastic_A synth** installation tool is made available for all first installations, as well as bigger projects. We are happy to lend you our installation tool for all other projects.

Using our **STRAILastic_A synth** installation tool guarantees a highquality installation (even clamping force over the entire installation area).

The **STRAILastic_A synth** dampers can also be installed manually using our mounting lever.



Final check: The damper is in final position if the fixing pins are protruding at an approximately equal length.

3 / INSTALLATION PERFORMANCE

A team of 10 workers allows an installation performance (without check intervals, dependent on the cycle time) of approx. 50–80 meters of track per hour.

4 / RAIL GRINDING / RE-PROFILING / TAMPING

For rail grinding, tamping, rail measurement as well as track works with ballast plough it is usually not necessary to remove any **STRAILastic_A synth** components.

5 / SELECTIVE REMOVAL / REMOVAL

5.1 / Rail Welding, Rail Breakage

STRAILastic_A synth dampers are resistant against temporary increasing temperatures.

This applies particularly the scope of minor build-up welding.

The components need to be removed in cases of repairing rail breakage and/or multi-layer build-up welding. The **STRAILastic_A synth** dampers are easy to remove in cases of rail breakage (see 5.2). In this case, please pay attention to the DB AG guidelines.

After welding has been completed the removed component may be adapted to the new rail geometry. Complete installation in accordance with Assembly Instructions.

5.2 / Removal

INSTALLED PRODUCT

STRAILastic_A synth dampers and STRAILastic_A synth clamp.

ASSEMBLY TOOL TO REMOVE STRAILastic_A synth

Prepare the removal aid:

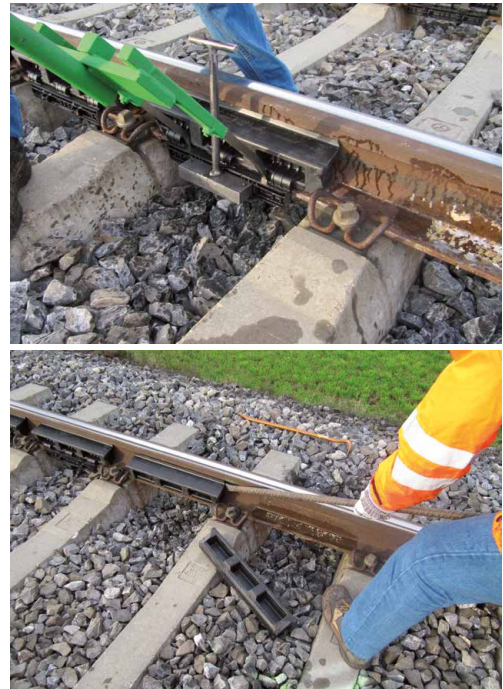
- ① Removal lever
- ② Expanding mandrel
- ③ Standard commercial hammer
- ④ standard commercial crowbar

Drive the **STRAILastic_A synth** expanding mandrel into the respective holes of the fixing clamp with hard blows of the hammer.



Afterwards, insert the removal lever between the **STRAILastic_A synth** damper and **STRAILastic_A synth** clamp and spread apart.

The **STRAILastic_A synth** damper can be easily removed by use of a standard commercial crowbar.



5.3 / Re-Installation

For re-installation please follow the steps as described in point # 2 / **INSTALLATION**.

PLEASE NOTE

Please read the document carefully and install **KRAIBURG STRAIL** products in compliance with the manufacturer's guidelines, or request assistance from our assembly team. This document is for information purposes only in connection with **KRAIBURG STRAIL** products. No intellectual property rights are granted by this document. No part of this document may be reproduced in any form in whole or in part without the express written permission of **KRAIBURG STRAIL**. **KRAIBURG STRAIL** expressly disclaims any infringement of the rights of third parties which are the intellectual, industrial or other property of third parties. Changes and errors are reserved.

The information provided in this document reflects our state of knowledge on the day of publication.
The General Terms and Conditions of **KRAIBURG STRAIL** apply in the currently valid version.